

In Progress PREQ (iPREQ) 2013

For the iPREQ 2013, 340 usable responses were received from a possible 630 surveyed HDR students, giving a response rate of 54%.

The survey was conducted in November 2013.

The iPREQ is adapted from the national Postgraduate Research Experience Questionnaire which is sent to completed HDR students 4 months following completion.

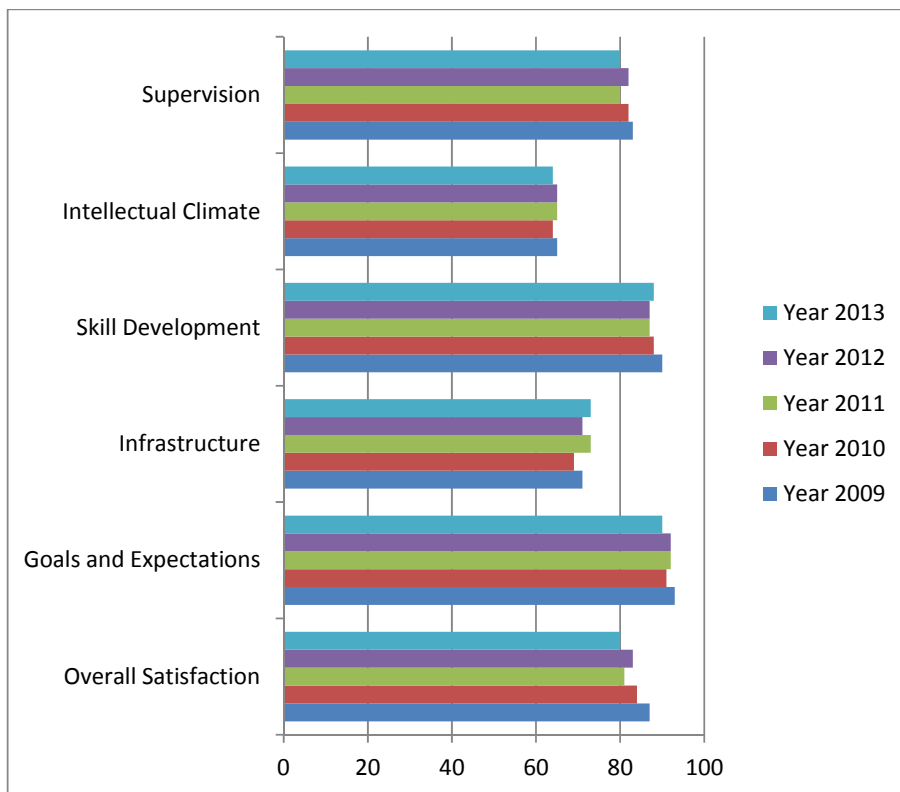
InProgress-PREQ (iPREQ) scale scores (percentage agreement) by year

	ECU in-progress 2009	ECU in-progress 2010	ECU in-progress 2011	ECU in-progress 2012	ECU in-progress 2013
	Max N =272	Max N =327	Max N =339	Max N =373	Max N =340
Scale	%Agree	%Agree	%Agree	%Agree	%Agree
Supervision	83	82	80	82	80
Intellectual Climate	65	64	65	65	64
Skill Development	90	88	87	87	88
Infrastructure	71	69	73	71	73
Goals and Expectations	93	91	92	92	90
Overall Satisfaction	87	84	81	83	80

Notes:

1. Percent Agreement is the proportion of responses of "Strongly Agree" or "Agree" on the five-point response scale, averaged over items within each scale, and then averaged over respondents.
2. Thesis examination items are not used for in-progress students.
3. Only one of the three Goals and Expectations items is included in the iPREQ.

iPREQ - % agreement



InProgress-PREQ (iPREQ) scale scores (percentage agreement) by Faculty

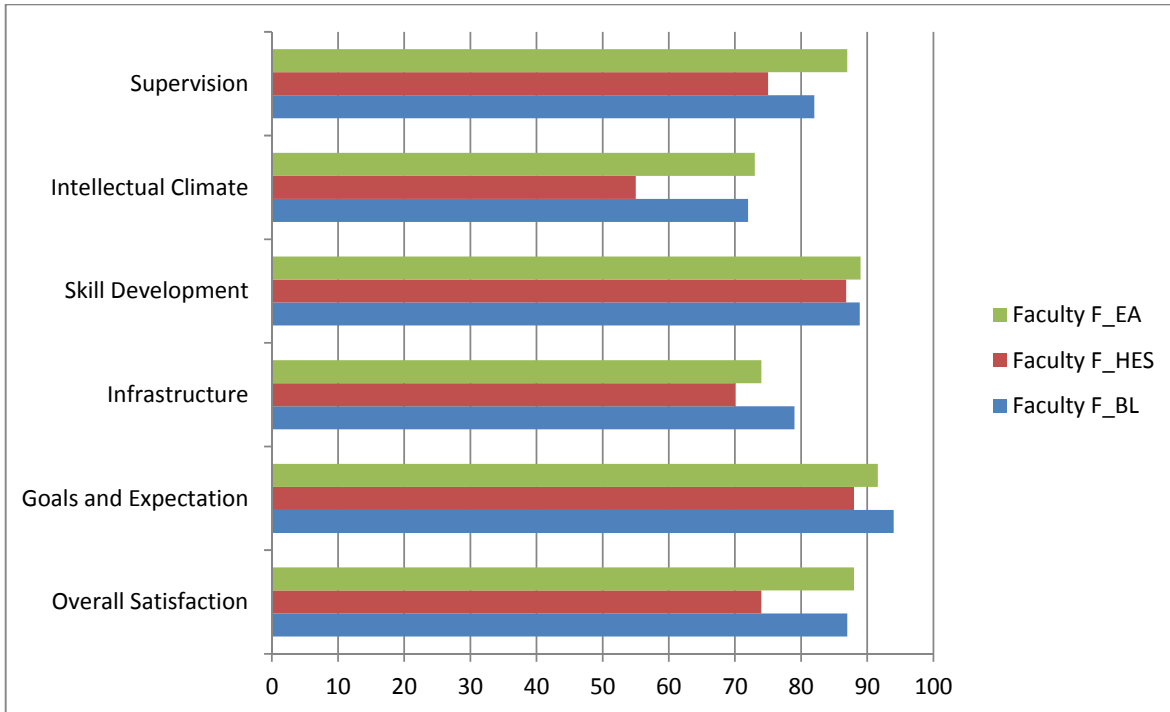
	Fac Bus&Law				Fac Health, Engineering & Science			
	maxN= 51	maxN= 52	maxN= 56	maxN= 54	maxN= 153	maxN= 170	maxN= 192	maxN= 184
	2010	2011	2012	2013	2010	2011	2012	2013
	%Agree	%Agree	%Agree	%Agree	%Agree	%Agree	%Agree	%Agree
Supervision	86	84	80	82	78	79	79	75
Intellectual Climate	71	69	67	72	65	63	59	55
Skill Development	90	87	87	89	87	88	86	87
Infrastructure	69	76	74	79	71	76	70	70
Goals and Expectations	96	91	91	94	90	94	92	88
Overall Satisfaction	88	78	84	87	82	82	80	74

	Fac Education & Arts			
	maxN= 117	maxN= 108	maxN= 121	maxN= 98
	2010	2011	2012	2013
	%Agree	%Agree	%Agree	%Agree
Supervision	85	81	85	87
Intellectual Climate	60	65	74	73
Skill Development	88	86	90	89
Infrastructure	67	65	72	74
Goals and Expectations	92	89	93	92
Overall Satisfaction	87	82	87	88

Notes:

1. Percent Agreement is the proportion of responses of "Strongly Agree" or "Agree" on the five-point response scale, averaged over items within each scale, and then averaged over respondents.
2. Thesis examination items are not used for in-progress students.
3. Only one of the three Goals and Expectations items is included in the iPREQ.
4. RPS results are not reported here because of an undertaking not to publish results where response numbers are less than 10.

iPREQ - %Agree – Faculties 2013



InProgress-PREQ (iPREQ) item scores (percentage agreement) by year (grouped by scale)

Scales	Item label	Items	2009 %agree	2010 %agree	2011 %agree	2012 %agree	2013 %agree
Supervision Scale	PREQ01AP2	Supervision is available when I need it.	89	88	87	88	84
	PREQ07AP2	My supervisor makes a real effort to understand difficulties I face.	86	86	84	83	83
	PREQ13AP2	My supervisor(s) provides additional information relevant to my topic.	82	81	80	81	80
	PREQ17AP2	I am given good guidance in topic selection and refinement.	81	80	78	79	76
	PREQ21AP2	My supervisor(s) provides helpful feedback on my progress.	90	88	85	86	84
	PREQ24AP2	I receive good guidance in my literature search.	69	68	72	73	71
Intellectual Climate Scale	PREQ05AP2	The Faculty provides opportunities for social contact with other postgraduate students.	79	81	82	78	76
	PREQ09AP2	I am integrated into the Faculty's community.	51	49	52	48	51
	PREQ16AP2	The Faculty provides opportunities for me to become involved in the broader research culture.	67	66	68	70	67
	PREQ22AP2	A good seminar program for postgraduate students is provided.	73	66	68	74	67
	PREQ23AP2	The research ambience in the School or Faculty stimulates my work.	55	51	54	55	55
Skill Development Scale	PREQ06AP2	My research is further developing my problem-solving skills.	92	90	88	90	89
	PREQ10AP2	I am learning to develop my ideas and present them in my written work.	92	91	90	91	92
	PREQ14AP2	My research is sharpening my analytical skills.	92	91	92	92	93
	PREQ20AP2	Doing my research is helping me to develop my ability to plan my work.	90	87	86	85	85
	PREQ26AP2	As a result of my research, I feel confident about tackling unfamiliar problems.	83	80	77	77	79
Infrastructure Scale	PREQ03AP2	I have access to a suitable working space.	79	77	80	81	83
	PREQ08AP2	I have good access to the technical support I need.	75	74	74	73	77
	PREQ12AP2	I am able to organise good access to necessary equipment.	74	72	74	75	76
	PREQ18AP2	I have good access to computing facilities and services.	80	77	81	77	79
	PREQ27AP2	There is appropriate financial support for research activities.	49	46	52	49	50
Goals and Expectations Scale	PREQ04AP2	I am developing an understanding of the standard of work expected.	93	92	92	92	90
Overall Satisfaction Scale	PREQ28AP2	Overall, I am satisfied with the quality of my higher degree research experience.	87	84	81	83	80

Notes:

1. Percent Agreement is the proportion of responses of "Strongly Agree" or "Agree" on the five-point response scale, averaged over items within each scale, and then averaged over respondents.
2. Thesis examination items are not used for in-progress students.
3. Only one of the three Goals and Expectations items is included in the iPREQ.