

# THE RAINIE STUDY



## What is The Raine Study?

Initiated in 1989 in Perth, Western Australia, The Raine Study is multigenerational longitudinal research study that follows a cohort of 'Western Australians' across four generations. This pioneering study, one of the largest of its kind globally, focuses on understanding the interactions of genetics, environment, behaviour, and developmental outcomes to advance human health and well-being. Not just a snapshot in time; the study is a living timeline of the developmental origins of health and disease from pregnancy into adulthood, spanning four generations.

## What is available for Researchers?

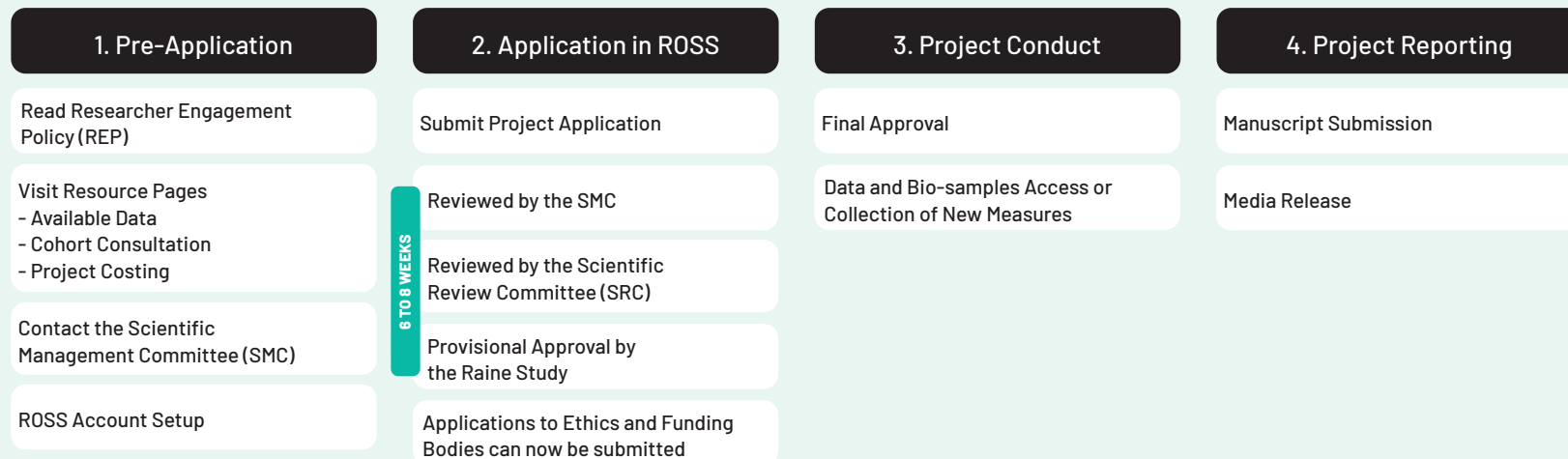
A research platform that provides access to extensive sources of evidence about the developmental origins of health and disease. It allows researchers to examine and understand the factors influencing human health from a developmental perspective

Honours, Masters, or PhD research students are encouraged to explore opportunities to leverage Raine Study data for a chance to work on projects that explore human development and well-being.

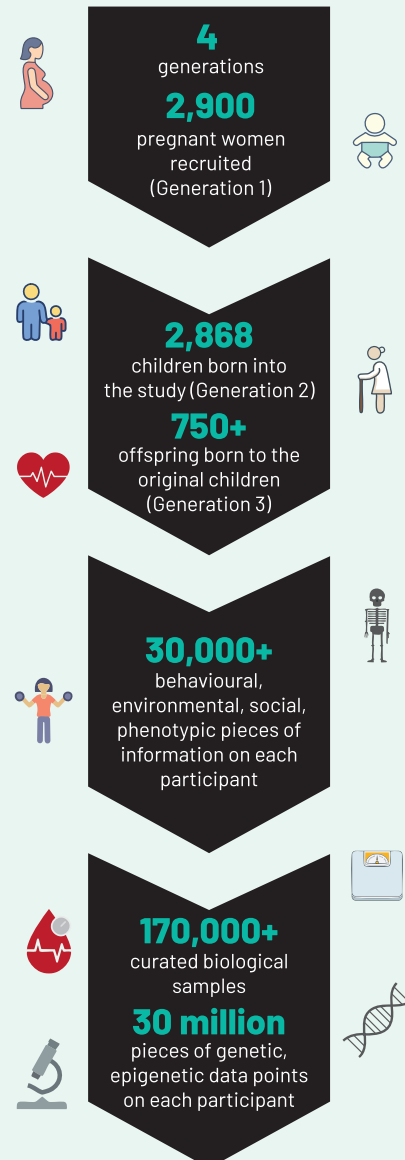
New and existing researchers can access the Raine Study [Available Data and Biosamples](#).

See links for [Commonly Used Resources](#) and [Researcher FAQs](#)

## Application process

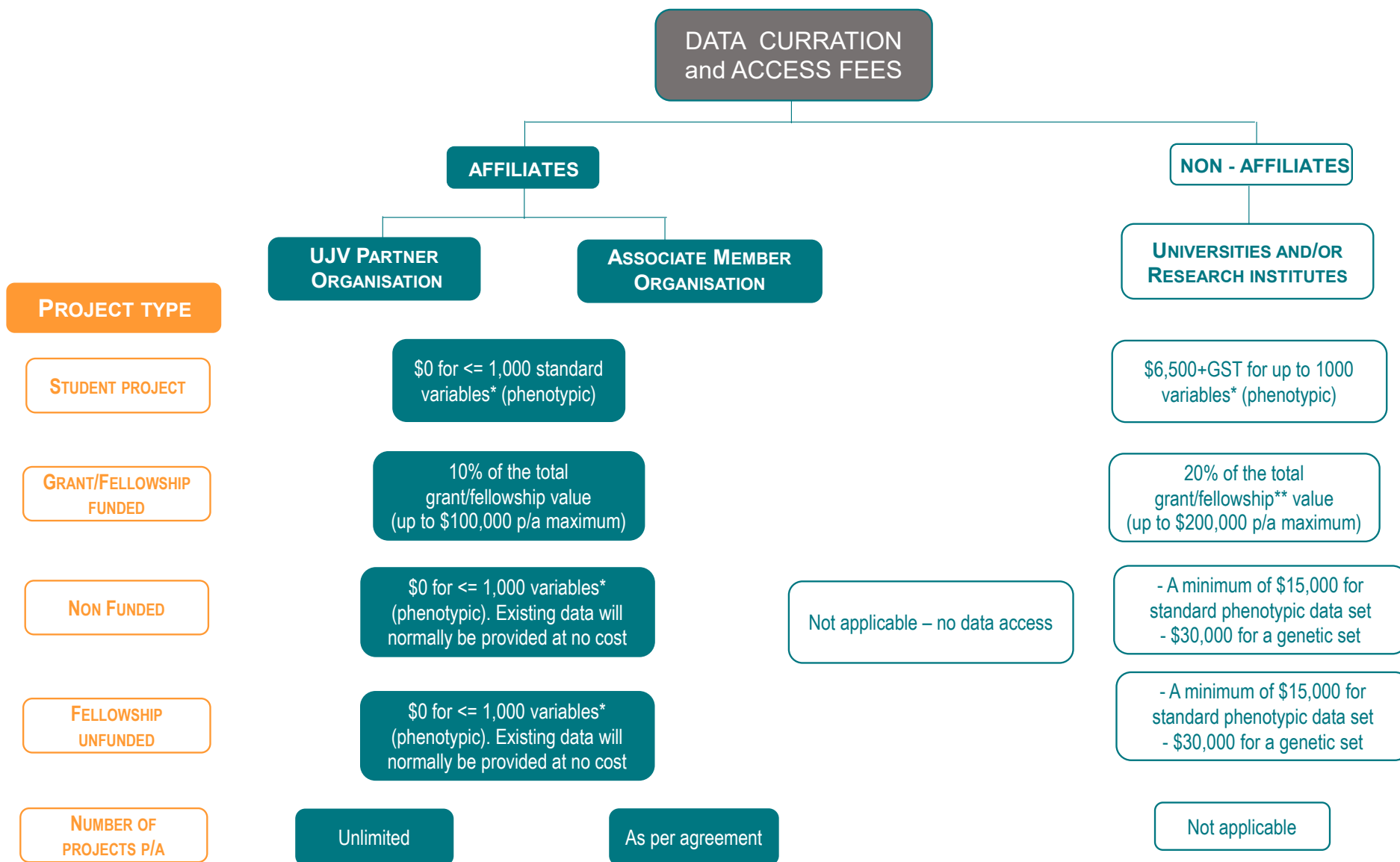


6 TO 8 WEEKS



## RAINE Study UJV Partner Benefits

Project Type	UJV Partner Benefits	Non-Partner University / Research Institute
<b>Student</b>	*\$0 cost for ≤ 1,000 phenotypic variables (existing/available data).	\$6,500+GST for ≤ 1,000 variables (phenotypic)
<b>Grant Funded / Fellowship Funded</b>	Data curation and access fee: 10% of the total grant/fellowship value - up to \$100,000 p/a maximum - where the grant is administered by a UJV partner.	Not applicable - no data access
<b>Non-Funded</b>	*\$0 cost for ≤ 1,000 phenotypic variables (existing/available data).	Not applicable - no data access
<b>Fellowship Unfunded</b>	\$0 Data curation and access fee *\$0 Existing/available data will be provided at no cost to researchers.	A minimum of \$15,000 for a 'standard' phenotypic data set and \$30,000 for a genetic data set.
<b>Amendments</b>	To be discussed with Scientific Manager	\$6,500+GST for ≤ 1,000 variables (phenotypic) per amendment
<b>Other Value-Added Benefits</b>		
<b>Number of Projects per annum</b>	Unlimited	Not applicable
<b>Researcher Support / Customer Service Experience</b>	Raine Study's Scientific staff assist researchers and students in developing their project and ascertaining the level of complexity of data required for each project, and Participant access.	Additional costs may be applicable



\* For very large or for complex data requests a more appropriate fee will be negotiated with the student researcher prior to project approval. Genetic variables are counted as 1 variable towards the 1,000 provided analyses are performed using Pawsey.

\*\* For non-affiliates - Grant value lower than:  
\$25,000 can use a reduced rate of 5%  
\$50,000 can use a reduced rate of 10%