

In Progress PREQ (iPREQ)

For the iPREQ 2011, 348 usable responses were received from a possible 661 surveyed HDR students, giving a response rate of 53%.

The survey was conducted November 2011.

The iPREQ is adapted from the national Postgraduate Research Experience Questionnaire which is sent to completed HDR students 4 months following completion.

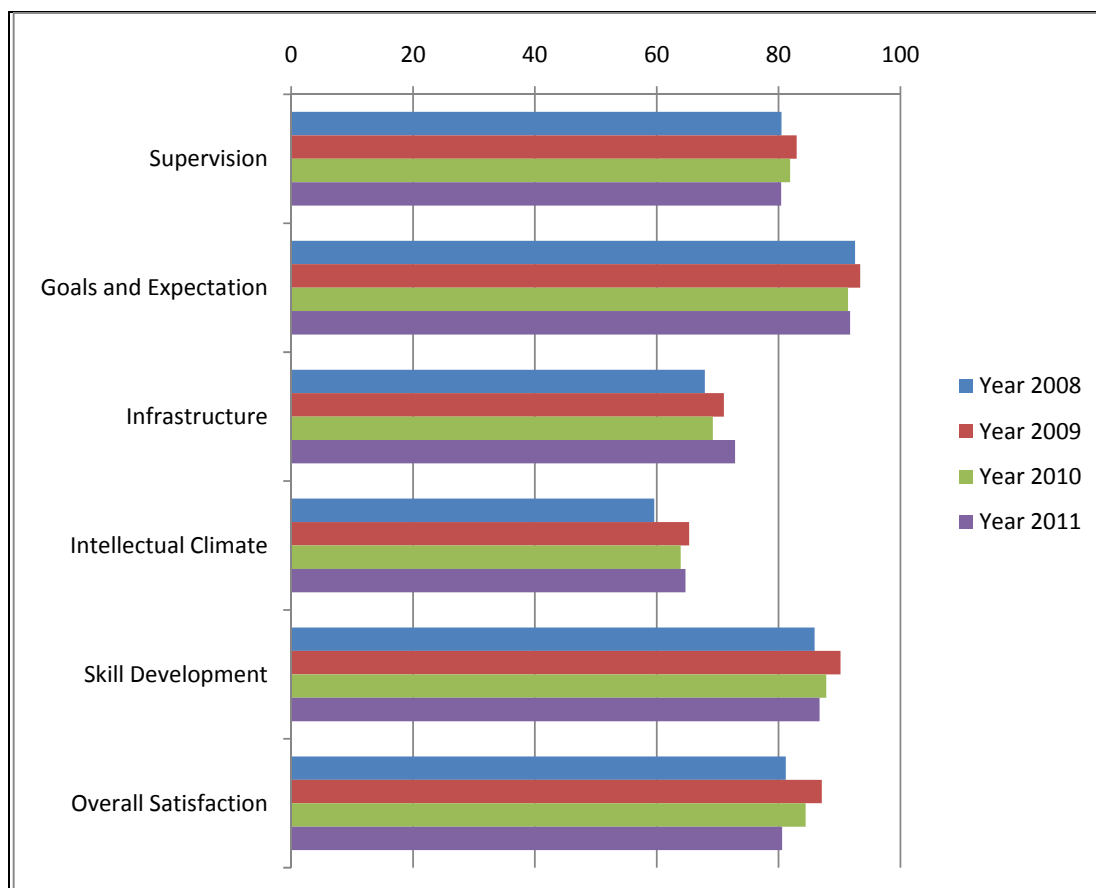
InProgress-PREQ (iPREQ) scale scores (percentage agreement) by year

	ECU in-progress 2008	ECU in-progress 2009	ECU in-progress 2010	ECU in-progress 2011
	Max N=257	Max N =272	Max N =327	Max N =339
Scale	%Agree	%Agree	%Agree	%Agree
Supervision	80	83	82	80
Intellectual Climate	60	65	64	65
Skill Development	86	90	88	87
Infrastructure	68	71	69	73
Goals and Expectations	93	93	91	92
Overall Satisfaction	81	87	84	81

Notes:

1. Percent Agreement is the proportion of responses of "Strongly Agree" or "Agree" on the five-point response scale, averaged over items within each scale, and then averaged over respondents.
2. Thesis examination items are not used for in-progress students.
3. Only one of the three Goals and Expectations items is included in the iPREQ.

iPREQ - % agreement



InProgress-PREQ (iPREQ) scale scores (percentage agreement) by Faculty

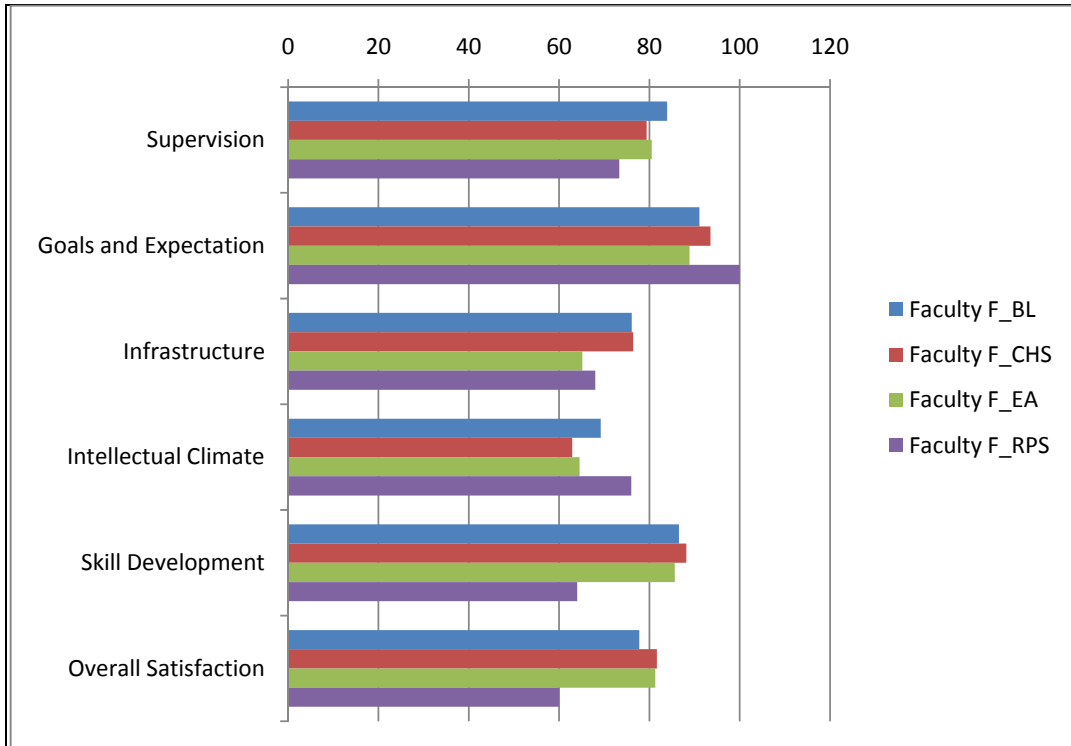
	Fac Bus&Law				Fac Computing, Health & Science			
	maxN= 33	maxN= 32	maxN= 51	maxN= 52	maxN= 137	maxN= 146	maxN= 153	maxN= 170
	2008	2009	2010	2011	2008	2009	2010	2011
	%Agree	%Agree	%Agree	%Agree	%Agree	%Agree	%Agree	%Agree
Supervision	87	78	86	84	77	83	78	79
Intellectual Climate	65	58	71	69	61	66	65	63
Skill Development	91	92	90	87	84	90	87	88
Infrastructure	71	68	69	76	68	74	71	76
Goals and Expectations	97	91	96	91	91	94	90	94
Overall Satisfaction	82	81	88	78	78	88	82	82

	Fac Education & Arts				Fac Regional Professional Studies			
	maxN= 80	maxN= 94	maxN= 117	maxN= 108	maxN= 3	maxN= 1	maxN= 6	maxN= 5
	2008	2009	2010	2011	2008	2009	2010	2011
	%Agree	%Agree	%Agree	%Agree	%Agree	%Agree	%Agree	%Agree
Supervision	83	84	85	81				73
Intellectual Climate	56	66	60	65				100
Skill Development	87	90	88	86				68
Infrastructure	67	67	67	65				76
Goals and Expectations	93	93	92	89				64
Overall Satisfaction	86	87	87	82				60

Notes:

1. Percent Agreement is the proportion of responses of "Strongly Agree" or "Agree" on the five-point response scale, averaged over items within each scale, and then averaged over respondents.
2. Thesis examination items are not used for in-progress students.
3. Only one of the three Goals and Expectations items is included in the iPREQ.
4. Prior to 2011 SW Campus figures were suppressed due to reporting constraints. A change in reporting policy in 2011 has now made it possible to report on cohorts where the target population is ten or more.

iPREQ - %Agree – Faculties 2011



**InProgress-PREQ (iPREQ) item scores (percentage agreement) by year.
(grouped by scale)**

Scales	Item label	Items	2008 %agree	2009 %agree	2010 %agree	2011 %agree
Supervision Scale	PREQ01AP2	Supervision is available when I need it.	86	89	88	87
Supervision Scale	PREQ07AP2	My supervisor makes a real effort to understand difficulties I face.	87	86	86	84
Supervision Scale	PREQ13AP2	My supervisor(s) provides additional information relevant to my topic.	80	82	81	80
Supervision Scale	PREQ17AP2	I am given good guidance in topic selection and refinement.	78	81	80	78
Supervision Scale	PREQ21AP2	My supervisor(s) provides helpful feedback on my progress.	85	90	88	85
Supervision Scale	PREQ24AP2	I receive good guidance in my literature search.	66	69	68	72
Intellectual Climate Scale	PREQ05AP2	The Faculty provides opportunities for social contact with other postgraduate students.	81	79	81	82
Intellectual Climate Scale	PREQ09AP2	I am integrated into the Faculty's community.	46	51	49	52
Intellectual Climate Scale	PREQ16AP2	The Faculty provides opportunities for me to become involved in the broader research culture.	62	67	66	68
Intellectual Climate Scale	PREQ22AP2	A good seminar program for postgraduate students is provided.	61	73	66	68
Intellectual Climate Scale	PREQ23AP2	The research ambience in the School or Faculty stimulates my work.	46	55	51	54
Skill Development Scale	PREQ06AP2	My research is further developing my problem-solving skills.	91	92	90	88
Skill Development Scale	PREQ10AP2	I am learning to develop my ideas and present them in my written work.	89	92	91	90
Skill Development Scale	PREQ14AP2	My research is sharpening my analytical skills.	91	92	91	92
Skill Development Scale	PREQ20AP2	Doing my research is helping me to develop my ability to plan my work.	84	90	87	86
Skill Development Scale	PREQ26AP2	As a result of my research, I feel confident about tackling unfamiliar problems.	76	83	80	77
Infrastructure Scale	PREQ03AP2	I have access to a suitable working space.	76	79	77	80
Infrastructure Scale	PREQ08AP2	I have good access to the technical support I need.	72	75	74	74
Infrastructure Scale	PREQ12AP2	I am able to organise good access to necessary equipment.	72	74	72	74
Infrastructure Scale	PREQ18AP2	I have good access to computing facilities and services.	75	80	77	81
Infrastructure Scale	PREQ27AP2	There is appropriate financial support for research activities.	41	49	46	52
Goals and Expectations Scale	PREQ04AP2	I am developing an understanding of the standard of work expected.	93	93	92	92
Overall Satisfaction Scale	PREQ28AP2	Overall, I am satisfied with the quality of my higher degree research experience.	81	87	84	81

Notes:

1. Percent Agreement is the proportion of responses of "Strongly Agree" or "Agree" on the five-point response scale, averaged over items within each scale, and then averaged over respondents.
2. Thesis examination items are not used for in-progress students.
3. Only one of the three Goals and Expectations items is included in the iPREQ.