

## In Progress PREQ (iPREQ) 2014

For the iPREQ 2014, 345 usable responses were received from a possible 606 surveyed HDR students, giving a response rate of 57%, an excellent return for an online student survey.

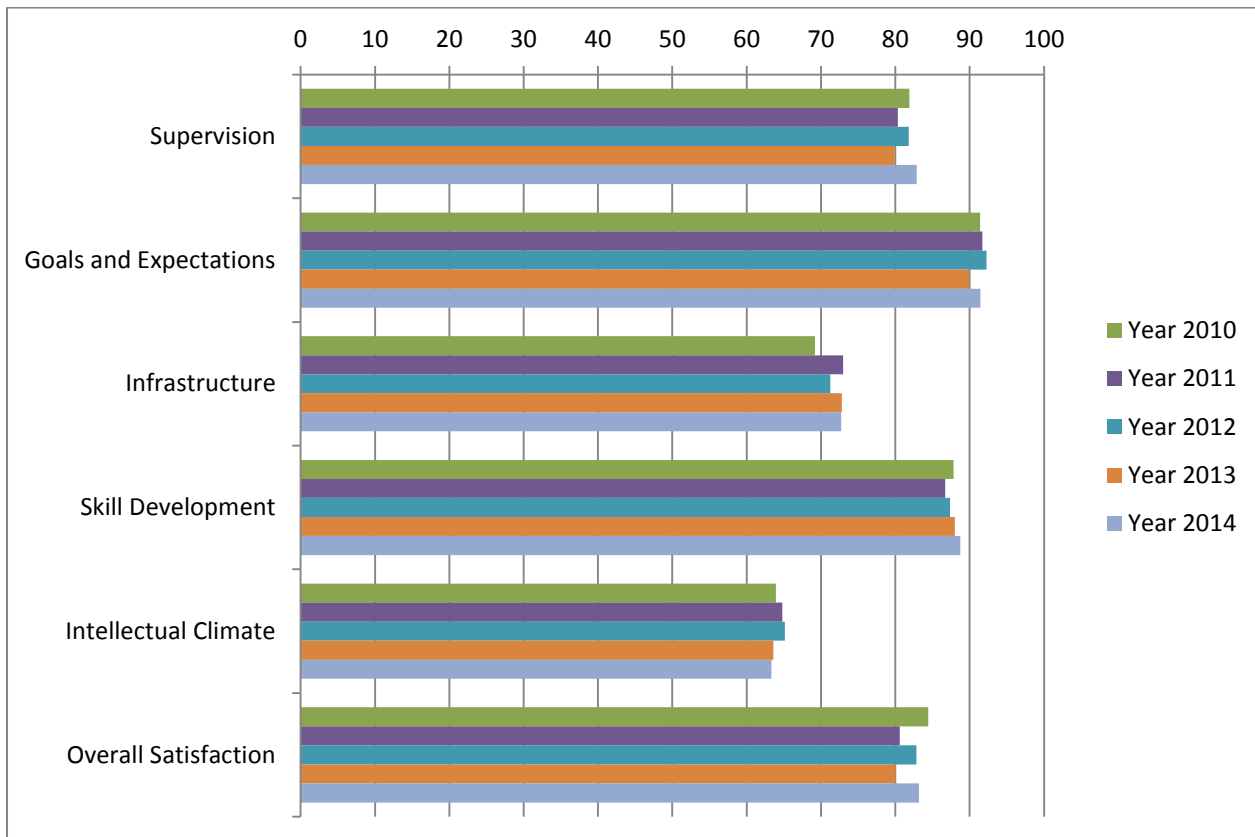
The survey was conducted from 27<sup>th</sup> November to 15<sup>th</sup> December 2014 via an invitation email and several followups. The iPREQ is adapted from the national Postgraduate Research Experience Questionnaire which is sent to completed HDR students 4 months following completion.

### InProgress-PREQ (iPREQ) scale scores (percentage agreement) by year

	ECU in-progress 2010	ECU in-progress 2011	ECU in-progress 2012	ECU in-progress 2013	ECU in-progress 2014
	Max N =327	Max N =339	Max N =373	Max N =340	Max N =345
Scale	%Agree	%Agree	%Agree	%Agree	%Agree
Supervision	82	80	82	80	83
Intellectual Climate	64	65	65	64	63
Skill Development	88	87	87	88	89
Infrastructure	69	73	71	73	73
Goals and Expectations	91	92	92	90	91
Overall Satisfaction	84	81	83	80	83

- Notes:
1. Percent Agreement is the proportion of responses of “Strongly Agree” or “Agree” on the five-point response scale, averaged over items within each scale, and then averaged over respondents.
  2. Items from the Thesis Examination scale are not used for in-progress students.
  3. Only one of the three Goals and Expectations items is included in the iPREQ.

### iPREQ - % agreement 2014



## InProgress-PREQ (iPREQ) scale scores (percentage agreement) by Faculty

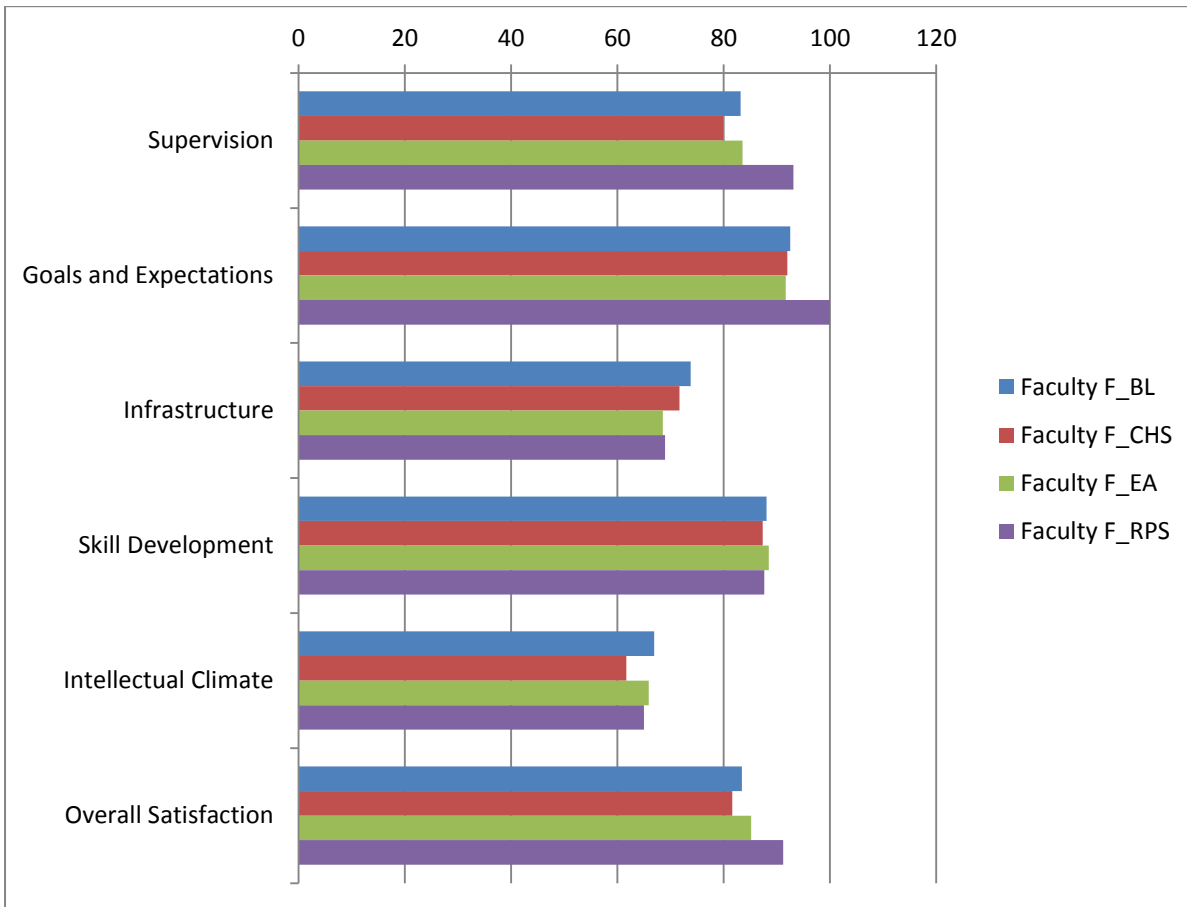
	Fac Bus&Law				Fac Health, Engineering & Science			
	maxN=52	maxN=56	maxN=54	maxN=39	maxN=170	maxN=192	maxN=184	maxN=197
	2011	2012	2013	2014	2011	2012	2013	2014
	%Agree	%Agree	%Agree	%Agree	%Agree	%Agree	%Agree	%Agree
Supervision	84	80	82	83	79	79	75	81
Intellectual Climate	69	67	72	69	63	59	55	59
Skill Development	87	87	89	83	88	86	87	89
Infrastructure	76	74	79	83	76	70	70	71
Goals and Expectations	91	91	94	89	94	92	88	91
Overall Satisfaction	78	84	87	87	82	80	74	81

	Fac Education & Arts				Fac Regional Professional Studies			
	maxN=108	maxN=121	maxN=98	maxN=102				maxN= 7
	2011	2012	2013	2014	2011	2012	2013	2014
	%Agree	%Agree	%Agree	%Agree	%Agree	%Agree	%Agree	%Agree
Supervision	81	85	87	85	-	-	-	95
Intellectual Climate	65	74	73	70	-	-	-	71
Skill Development	86	90	89	89	-	-	-	94
Infrastructure	65	72	74	72	-	-	-	71
Goals and Expectations	89	93	92	92	-	-	-	100
Overall Satisfaction	82	87	88	85	-	-	-	100

**Notes:**

1. Percent Agreement is the proportion of responses of "Strongly Agree" or "Agree" on the five-point response scale, averaged over items within each scale, and then averaged over respondents.
2. Items from the Thesis Examination scale are not used for in-progress students.
3. Only one of the three Goals and Expectations items is included in the iPREQ.
4. RPS results are not reported for 2011 through 2013 because of an undertaking not to publish results where response numbers are less than 10. The threshold was dropped to 5 in 2014.

## iPREQ - % agreement – Facilities 2014



## InProgress-PREQ (iPREQ) item scores (percentage agreement) by year (grouped by scale)

Scales	Item label	Items	2010 %agree	2011 %agree	2012 %agree	2013 %agree	2014 %agree
<b>Supervision Scale</b>	PREQ01AP2	Supervision is available when I need it.	88	87	88	84	89
	PREQ07AP2	My supervisor makes a real effort to understand difficulties I face.	86	84	83	83	85
	PREQ13AP2	My supervisor(s) provides additional information relevant to my topic.	81	80	81	80	83
	PREQ17AP2	I am given good guidance in topic selection and refinement.	80	78	79	76	76
	PREQ21AP2	My supervisor(s) provides helpful feedback on my progress.	88	85	86	84	89
	PREQ24AP2	I receive good guidance in my literature search.	68	72	73	71	72
<b>Intellectual Climate Scale</b>	PREQ05AP2	The Faculty provides opportunities for social contact with other postgraduate students.	81	82	78	76	75
	PREQ09AP2	I am integrated into the Faculty's community.	49	52	48	51	50
	PREQ16AP2	The Faculty provides opportunities for me to become involved in the broader research culture.	66	68	70	67	65
	PREQ22AP2	A good seminar program for postgraduate students is provided.	66	68	74	67	69
	PREQ23AP2	The research ambience in the School or Faculty stimulates my work.	51	54	55	55	57
<b>Skill Development Scale</b>	PREQ06AP2	My research is further developing my problem-solving skills.	90	88	90	89	92
	PREQ10AP2	I am learning to develop my ideas and present them in my written work.	91	90	91	92	93
	PREQ14AP2	My research is sharpening my analytical skills.	91	92	92	93	93
	PREQ20AP2	Doing my research is helping me to develop my ability to plan my work.	87	86	85	85	85
	PREQ26AP2	As a result of my research, I feel confident about tackling unfamiliar problems.	80	77	77	79	81
<b>Infrastructure Scale</b>	PREQ03AP2	I have access to a suitable working space.	77	80	81	83	82
	PREQ08AP2	I have good access to the technical support I need.	74	74	73	77	73
	PREQ12AP2	I am able to organise good access to necessary equipment.	72	74	75	76	75
	PREQ18AP2	I have good access to computing facilities and services.	77	81	77	79	78
	PREQ27AP2	There is appropriate financial support for research activities.	46	52	49	50	54
<b>Goals and Expectations Scale</b>	PREQ04AP2	I am developing an understanding of the standard of work expected.	92	92	92	90	91
<b>Overall Satisfaction Scale</b>	PREQ28AP2	Overall, I am satisfied with the quality of my higher degree research experience.	84	81	83	80	83

Notes:

1. Percent Agreement is the proportion of responses of "Strongly Agree" or "Agree" on the five-point response scale, averaged over items within each scale, and then averaged over respondents.
2. Items from the Thesis Examination scale are not used for in-progress students.
3. Only one of the three Goals and Expectations items is included in the iPREQ.