

# Blackboard Analytics Unit at a Glance Report

This report provides summary information about one Blackboard unit, and comparative information against a group of other Blackboard units in the same school.

It can help analyse how a particular unit is designed, how the unit compares to the average of other units in the same school, and how the students in the unit are using and performing in the unit compared to the average of all students enrolled in the unit.

## Overview

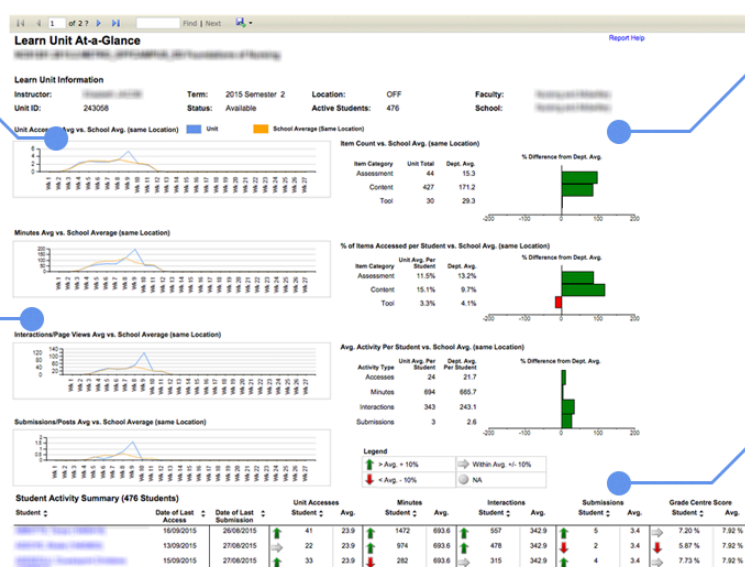
### Student Engagement

#### Student Interaction

Use these line graphs to quickly analyse the level of student engagement with your unit over the course of the teaching period. Your site is graphed in blue, and you can compare your site to the school average graphed in yellow.

#### Student Interaction

The **Minutes Avg** graph is useful in understanding how long students are spending engaging within your site. The **Interactions** graph is useful in getting a view on how students are engaging with the content. Each time a student clicks on an item of content it is counted for this graph.



### Unit Design

#### School Comparisons

Use these graphs to help debrief on the design of the unit by analysing the information in the context of your the average of other units in your school.

You can view the number of items built in your site, the percentage of these items actually being accessed by your students and an overview of the student activity in your unit site.

### Student Outcomes

#### Student Activity

A summary of student activity that can give you an insight into which students are at risk in your unit.

Students that have not accessed your unit, or students who are below average (red icon) could be contacted with additional support and encouragement.

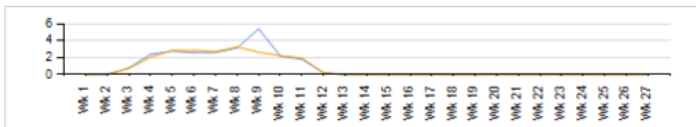
## Details

### Student Interaction Charts

■ Unit
 ■ School Average (Same Location)

#### Unit Accesses Avg vs School Avg. (same Location)

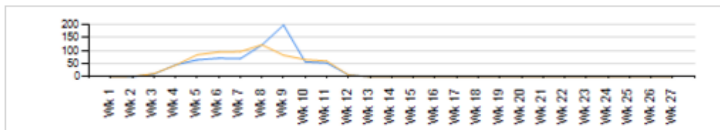
Unit Accesses Avg vs. School Avg. (same Location)



The average number of times the enrolled students accessed the Learn unit during the selected term (teaching period), compared to the school average per unit for the same term.

#### Minutes Avg vs School Average (same Location)

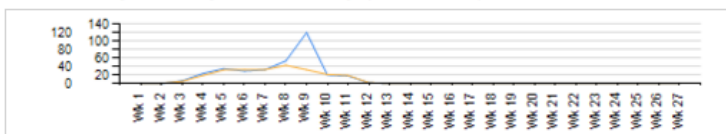
Minutes Avg vs. School Average (same Location)



The average amount of time (in minutes) the enrolled students spent in the Learn unit during the selected term, compared to the school average per unit for the same term.

#### Interactions/Page Views Avg vs School Average (same Location)

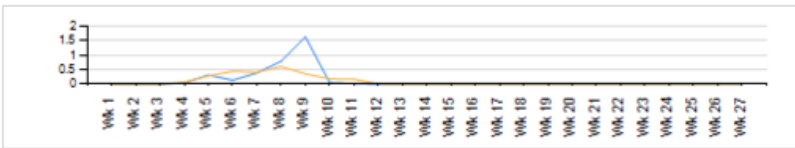
Interactions/Page Views Avg vs. School Average (same Location)



The average number of actions the enrolled students initiated in the context of the Learn unit during the selected term, compared to the school average per unit for the same term. Many types of student actions can lead to an interaction being logged, such as accessing an item, submitting a discussion forum post, etc.

## Submissions/Posts Avg vs School Average (same Location)

Submissions/Posts Avg vs. School Average (same Location)

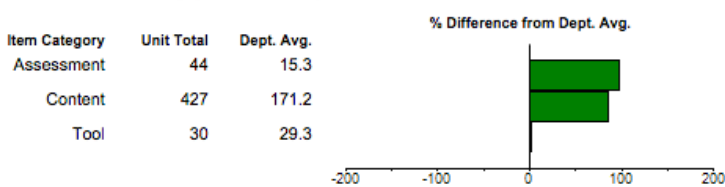


The average number of Assignment, Blog, Discussion, Journal, Safe Assignment, Survey, and Test submissions made by the enrolled students during the selected term, compared to the school average per unit for the same term.

## Unit Design Charts

### Item Count vs. School Avg. (same Location)

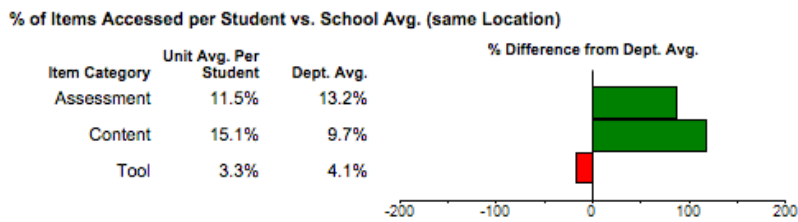
Item Count vs. School Avg. (same Location)



The site item measures for the selected Learn unit compared to the school average.

- **Assessment:** The count of assessments (e.g. tests, assignments, etc.) compared to department (school) average per unit.
- **Content:** The count of content items (e.g. pages, documents, etc.) compared to department (school) average per unit.
- **Tool:** The count of tools (e.g. discussion forums, blogs, journals, etc.) compared to department (school) average per unit.

## % of Items Accessed per Student vs. School Avg. (same Location)

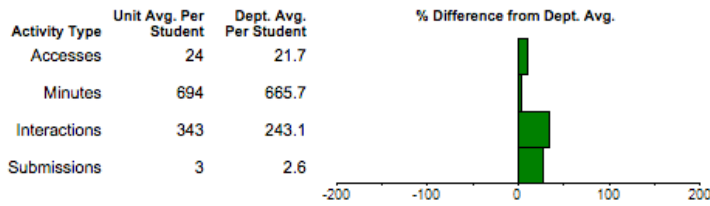


The percentage of items accessed per student for the selected Learn unit compared to the school average.

- **Assessment:** The percentage of assessments accessed per student (e.g. tests, assignments, etc.) compared to department (school) average per unit.
- **Content:** The percentage of content items accessed per student (e.g. pages, documents, etc.) compared to department (school) average per unit.
- **Tool:** The percentage of tools accessed per student (e.g. discussion forums, blogs, journals, etc.) compared to department (school) average per unit.

## Avg. Activity Per Student vs. School Avg. (same Location)

Avg. Activity Per Student vs. School Avg. (same Location)



The activity measures for the selected Learn unit compared to the school average.

- **Accesses:** The average course accesses per student for the entire term (semester) in the selected Learn unit compared to the department (school) average per unit.
- **Minutes:** The average amount of time per student for the entire term in the selected Learn unit compared to the department (school) average per unit.
- **Interactions:** The average interactions per student for the entire term in the selected Learn unit compared to the department (school) average per unit. Many types of student actions can lead to an interaction being logged, such as accessing an item, submitting a discussion forum post, etc.
- **Submissions:** The average number of Assignment, Blog, Discussion, Journal, Safe Assignment, Survey, and Test submissions per student for the entire term in the selected Learn unit compared to the department (school) average per unit.

## Student Activity Summary

### Student Activity Summary (476 Students)

Student ↕	Date of Last Access ↕	Date of Last Submission ↕	Unit Accesses		Minutes		Interactions		Submissions		Grade Centre Score						
			Student ↕	Avg.	Student ↕	Avg.	Student ↕	Avg.	Student ↕	Avg.	Student ↕	Avg.					
Student Name (blurred)	16/09/2015	26/08/2015	↑	41	23.9	↑	1472	693.6	↑	557	342.9	→	5	3.4	→	7.20 %	7.92 %
Student Name (blurred)	13/09/2015	27/08/2015	→	22	23.9	↑	974	693.6	↑	478	342.9	↓	2	3.4	↓	5.87 %	7.92 %

The current students enrolled in the selected Learn unit along with several measures, comparing a given student against the average of other students enrolled in the same unit.

## Icons

### Legend

↑ > Avg. + 10%	→ Within Avg. +/- 10%
↓ < Avg. - 10%	○ NA

- **Student:** The student name, including the Student ID.
- **Date of Last Access:** The date the student last accessed your Learn unit. Students who have not yet accessed your site will have nothing recorded here.
- **Date of Last Submission:** The date the student last submitted an assessment your Learn unit. Students who have not yet submitted to your site will have nothing recorded here.
- **Unit Accesses:** The number of times the selected student accessed the unit in which she is enrolled during the selected term, compared to the average number of unit accesses for the other enrolled students for the same unit.
- **Minutes:** The total amount of time (in minutes) that a given student has spent in the Learn unit compared to the average time spent by all of the other students enrolled in the same unit.
- **Interactions:** The total number of interactions for a given student in the Learn unit compared to the average interactions by the other students enrolled in the same unit.
- **Submissions:** The total number of submissions for a given student in the Learn unit compared to the average number of submissions by the other students enrolled in the same unit.
- **Grade Centre Score:** The student's grade centre grade (which uses the Grade Centre External Grade column), compared to the average of the other students enrolled in the same unit, both of which are established by the instructor. It is important to consider that the Grade Center Grade is determined by the instructor based on the way in which he or she has configured the Grade Centre, which may not necessarily correspond to the students' official grade(s) of record in Callista.