

In Progress PREQ (iPREQ)

For the iPREQ 2012, 373 usable responses were received from a possible 666 surveyed HDR students, giving a response rate of 56%.

The survey was conducted in November 2012.

The iPREQ is adapted from the national Postgraduate Research Experience Questionnaire which is sent to completed HDR students 4 months following completion.

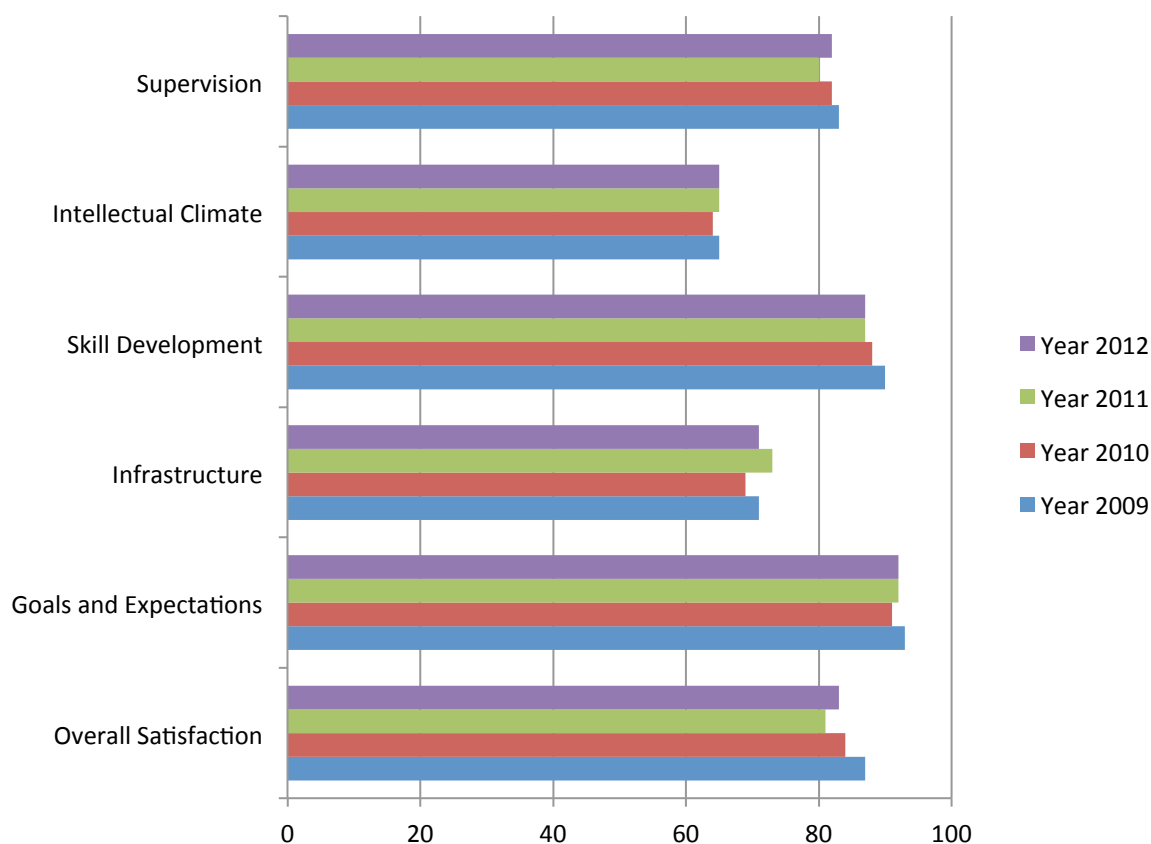
InProgress-PREQ (iPREQ) scale scores (percentage agreement) by year

	ECU in-progress 2009	ECU in-progress 2010	ECU in-progress 2011	ECU in-progress 2012
	Max N =272	Max N =327	Max N =339	Max N =373
Scale	%Agree	%Agree	%Agree	%Agree
Supervision	83	82	80	82
Intellectual Climate	65	64	65	65
Skill Development	90	88	87	87
Infrastructure	71	69	73	71
Goals and Expectations	93	91	92	92
Overall Satisfaction	87	84	81	83

Notes:

1. Percent Agreement is the proportion of responses of "Strongly Agree" or "Agree" on the five-point response scale, averaged over items within each scale, and then averaged over respondents.
2. Thesis examination items are not used for in-progress students.
3. Only one of the three Goals and Expectations items is included in the iPREQ.

iPREQ - % agreement



InProgress-PREQ (iPREQ) scale scores (percentage agreement) by Faculty

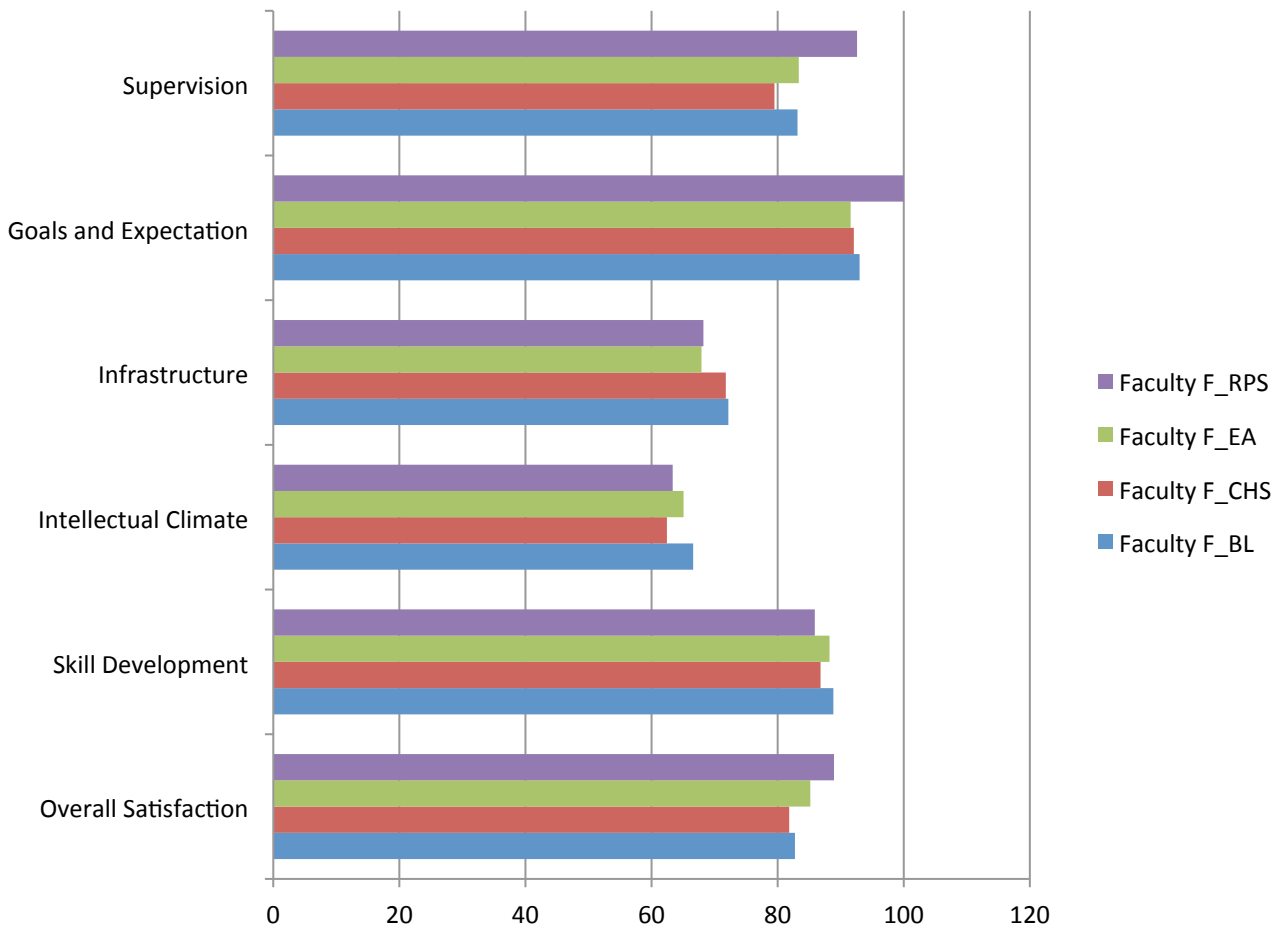
	Fac Bus&Law				Fac Computing, Health & Science			
	maxN= 32	maxN= 51	maxN= 52	maxN= 56	maxN= 146	maxN= 153	maxN= 170	maxN= 192
	2009	2010	2011	2012	2009	2010	2011	2012
	%Agree	%Agree	%Agree	%Agree	%Agree	%Agree	%Agree	%Agree
Supervision	78	86	84	80	83	78	79	79
Intellectual Climate	58	71	69	67	66	65	63	59
Skill Development	92	90	87	87	90	87	88	86
Infrastructure	68	69	76	74	74	71	76	70
Goals and Expectations	91	96	91	91	94	90	94	92
Overall Satisfaction	81	88	78	84	88	82	82	80

	Fac Education & Arts				Fac Regional Professional Studies			
	maxN= 94	maxN= 117	maxN= 108	maxN= 121	maxN= 1	maxN= 6	maxN= 5	maxN= 4
	2009	2010	2011	2012	2009	2010	2011	2012
	%Agree	%Agree	%Agree	%Agree	%Agree	%Agree	%Agree	%Agree
Supervision	84	85	81	85			73	
Intellectual Climate	66	60	65	74			100	
Skill Development	90	88	86	90			68	
Infrastructure	67	67	65	72			76	
Goals and Expectations	93	92	89	93			64	
Overall Satisfaction	87	87	82	87			60	

Notes:

1. Percent Agreement is the proportion of responses of "Strongly Agree" or "Agree" on the five-point response scale, averaged over items within each scale, and then averaged over respondents.
2. Thesis examination items are not used for in-progress students.
3. Only one of the three Goals and Expectations items is included in the iPREQ.
4. Prior to 2011 SW Campus figures were suppressed due to reporting constraints. A change in reporting policy in 2011 has now made it possible to report on cohorts where the target population is ten or more. 2012 SW Campus figures have been suppressed.

iPREQ - %Agree – Faculties 2012



**InProgress-PREQ (iPREQ) item scores (percentage agreement) by year.
(grouped by scale)**

Scales	Item label	Items	2009 %agree	2010 %agree	2011 %agree	2012 %agree
Supervision Scale	PREQ01AP2	Supervision is available when I need it.	89	88	87	88
Supervision Scale	PREQ07AP2	My supervisor makes a real effort to understand difficulties I face.	86	86	84	83
Supervision Scale	PREQ13AP2	My supervisor(s) provides additional information relevant to my topic.	82	81	80	81
Supervision Scale	PREQ17AP2	I am given good guidance in topic selection and refinement.	81	80	78	79
Supervision Scale	PREQ21AP2	My supervisor(s) provides helpful feedback on my progress.	90	88	85	86
Supervision Scale	PREQ24AP2	I receive good guidance in my literature search.	69	68	72	73
Intellectual Climate Scale	PREQ05AP2	The Faculty provides opportunities for social contact with other postgraduate students.	79	81	82	78
Intellectual Climate Scale	PREQ09AP2	I am integrated into the Faculty's community.	51	49	52	48
Intellectual Climate Scale	PREQ16AP2	The Faculty provides opportunities for me to become involved in the broader research culture.	67	66	68	70
Intellectual Climate Scale	PREQ22AP2	A good seminar program for postgraduate students is provided.	73	66	68	74
Intellectual Climate Scale	PREQ23AP2	The research ambience in the School or Faculty stimulates my work.	55	51	54	55
Skill Development Scale	PREQ06AP2	My research is further developing my problem-solving skills.	92	90	88	90
Skill Development Scale	PREQ10AP2	I am learning to develop my ideas and present them in my written work.	92	91	90	91
Skill Development Scale	PREQ14AP2	My research is sharpening my analytical skills.	92	91	92	92
Skill Development Scale	PREQ20AP2	Doing my research is helping me to develop my ability to plan my work.	90	87	86	85
Skill Development Scale	PREQ26AP2	As a result of my research, I feel confident about tackling unfamiliar problems.	83	80	77	77
Infrastructure Scale	PREQ03AP2	I have access to a suitable working space.	79	77	80	81
Infrastructure Scale	PREQ08AP2	I have good access to the technical support I need.	75	74	74	73
Infrastructure Scale	PREQ12AP2	I am able to organise good access to necessary equipment.	74	72	74	75
Infrastructure Scale	PREQ18AP2	I have good access to computing facilities and services.	80	77	81	77
Infrastructure Scale	PREQ27AP2	There is appropriate financial support for research activities.	49	46	52	49
Goals and Expectations Scale	PREQ04AP2	I am developing an understanding of the standard of work expected.	93	92	92	92
Overall Satisfaction Scale	PREQ28AP2	Overall, I am satisfied with the quality of my higher degree research experience.	87	84	81	83

Notes:

1. Percent Agreement is the proportion of responses of "Strongly Agree" or "Agree" on the five-point response scale, averaged over items within each scale, and then averaged over respondents.
2. Thesis examination items are not used for in-progress students.
3. Only one of the three Goals and Expectations items is included in the iPREQ.